


الشركة الأردنية القبرصية  
للصناعات الإنشائية ذ.م.م

**Jordanian Cypriot**  
Construction Industries Co. Ltd.

 **EuroTiles®**  **EuroStone®**



QUALITY YOU CAN RELY ON!





# 100% Commitment To QUALITY

*“When it comes to precast Terrazzo Tiles,  
& ever since its establishment in 1976, The Jordanian  
Cypriot Construction Industries Co. LTD., set itself apart  
by making “QUALITY” its number one concern.*

*with strict adherence to “QUALITY” control measures,  
starting from accepting only top “QUALITY” raw materials,  
continuous modernization of equipment & manufacturing  
techniques, obtaining ISO 9001 certificate, on-going  
research & development & attention to detail. The  
Jordanian Cypriot name become synonymous with  
top “QUALITY” Tiles the world over.*

*Our tiles comply with the required international  
standards such as Jordanian (JS), British (BS),  
German (DIN) & American (ASTM).”*

**Jordanian Cypriot**  
Construction Industries Co. Ltd.

الشركة الأردنية القبريوت  
للصناعات الإنشائية د.م.م



# مختبر فحص الجودة QUALITY TESTING LAB



جهاز فحص الاهتراء  
Abrasion Test Equipment



Our in-house laboratory is equipped with state-of-the-art testing equipments run by our quality engineers to make sure that only top quality products are delivered.

When tested in accordance with the methods described in JS-1/2009 for internal and JS-2/2010, for external use, the tiles shall comply with the following requirements at the minimum age of 28 days or at the age declared suitable for use by the manufacturer if earlier.

## a) Geometrical requirements.

### b) Thickness:

- The thickness of the facing layer of the manufactured tile shall be at least 4 mm for a product that will not be ground after laying.
- The thickness of the facing layer of the manufactured tile shall be at least 8 mm for a product that will be ground after laying.
- No thickness requirements are applicable to single layered tiles.

## c) Dimensional deviations

The deviations of the actual dimensions shall be :

- (1) Edge length  $\pm 0,3 \%$ .
- (2) Thickness of the unit  $\pm 10\%$ .

## d) Mechanical strength (Breaking strength):

The breaking strength shall be more than or equal to 3 Mpa and no individual result shall be lower than 2.8 Mpa.

## e) Abrasion:

Abrasion shall be no individual test result exceeds 30 cm<sup>3</sup>/50 cm<sup>2</sup> for internal use and 26 cm<sup>3</sup>/50 cm<sup>2</sup> for external use.

## f) Water Absorption:

shall be verified and tested in accordance with JS and no individual test result exceeds 10%.



المختبر Lab



جهاز فحص الاهتراء (القرص العريض)  
Abrasion Test Equipment (wide wheel)



جهاز فحص مقاومة الكسر  
Fluxtural Strength Test Equipment



جهاز فصل المواد الأولية حسب الحجم  
Raw Material Grading Sieves



فرن التجفيف Oven



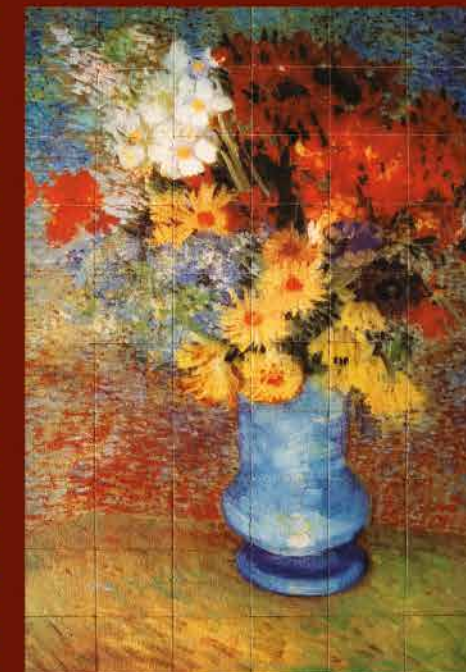
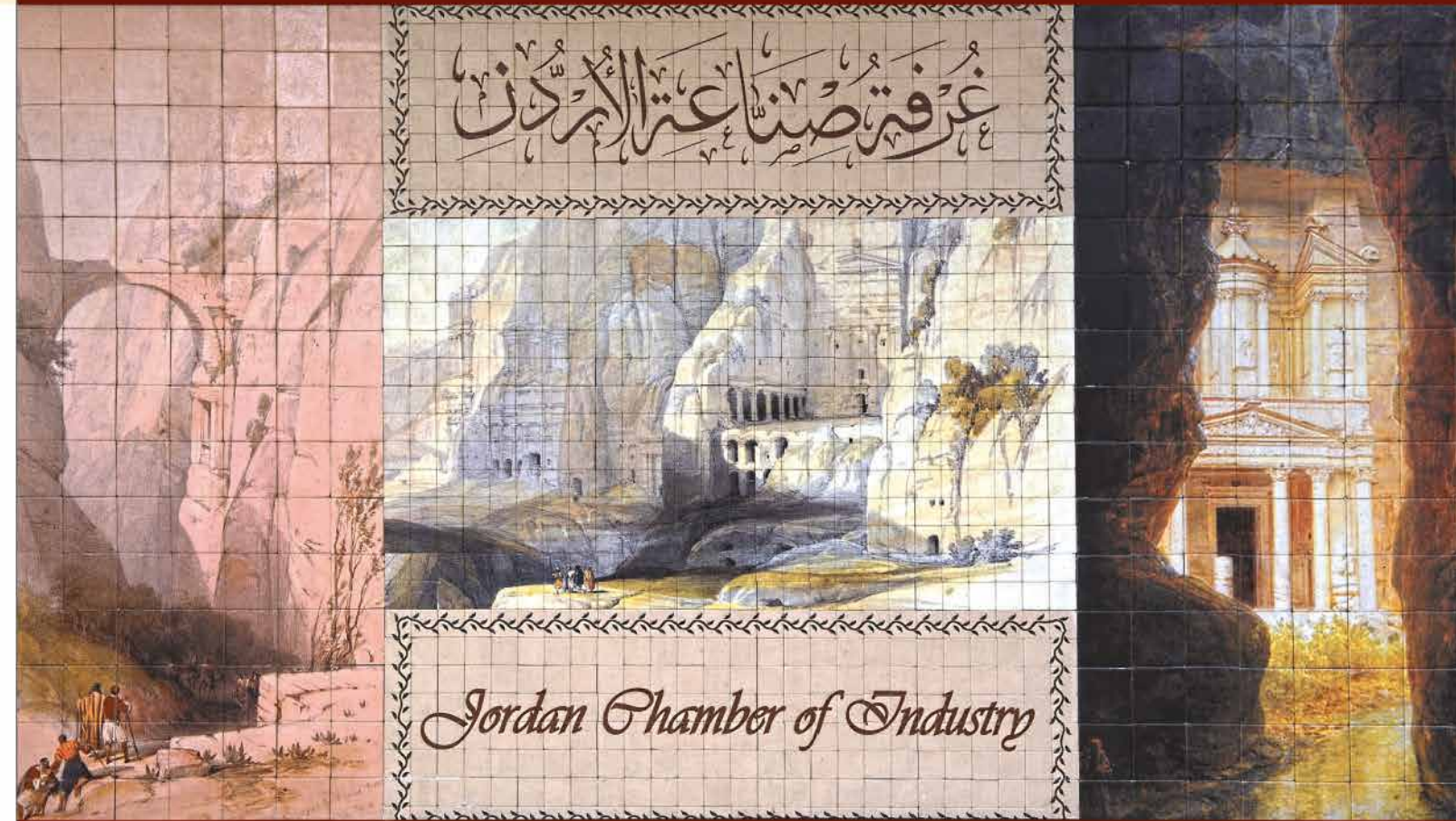
جداريات يورو الحجرية الفنية

# RUSTIC EUROSTONE® MURALS



- Unlimited choices of designs & paintings, Arabesque, Persian Rugs, Masterpieces, Landscape.. ets.
- Custom designs available.
- Easy to install on walls or framed for hanging.
- Tumbled Basalt, Granite and Limestone.
- Mosaics on mesh.
- Rock face & split face.
- Stone & Brick veneer.

- Variations in color & texture do occur.
- Photos of the tiles shown are intended as general reference only.
- Please ask for an actual sample.



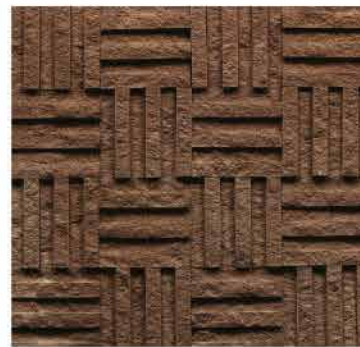


# RUSTIC EUROSTONE® CLADDING



The rustic reconstituted Eurostone line made from a mix of top quality natural ingredients like Basalt, Granite and Limestone, has an old weathered appearance full of character for interior and exterior applications, flooring and decorative wall cladding. The range of rustic finishes include:

- Tumbled Basalt, Granite & Limestone.
- Mosaics on mesh.
- Rock face & split face.
- Stone & Brick veneer.



- Variations in color & texture do occur.
- Photos of the tiles shown are intended as general reference only.
- Please ask for an actual sample.



# RUSTIC EUROTILES® LANDSCAPING

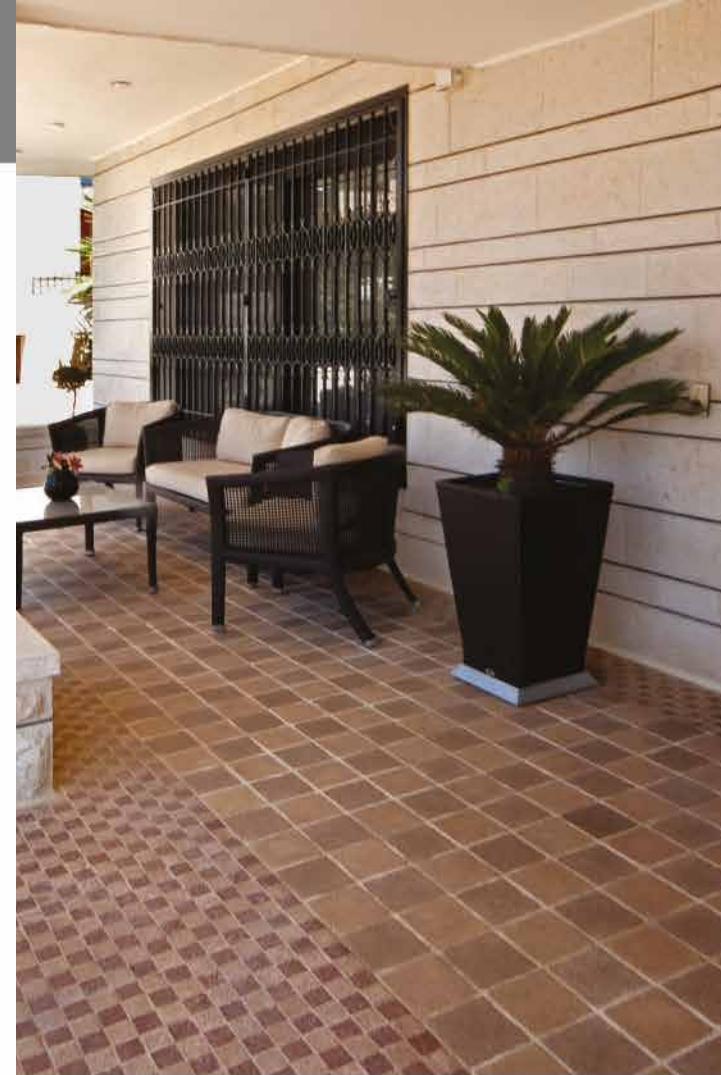


The rustic reconstituted Eurostone line made from a mix of top quality natural ingredients like Basalt, Granite and Limestone, has an old weathered appearance full of character for interior and exterior applications, flooring and decorative wall cladding. The range of rustic finishes include:

- Tumbled Basalt, Granite & Limestone.
- Mosaics on mesh.
- Rock face & split face.
- Stone & Brick veneer.
- Landscaping tiles.
- Anti slip stairs.



- Variations in color & texture do occur.
- Photos of the tiles shown are intended as general reference only.
- Please ask for an actual sample.





# RUSTIC EUROTILES® LANDSCAPING

Tumbled



The range of rustic finishes include:

- Tumbled Basalt, Granite & Limestone.
- Mosaics on mesh.
- Landscaping tiles.
- Custom sizes available.





# RUSTIC EUROTILES® LANDSCAPING



- Sand blasted.
- Non-Slip.
- Perfect for High Traffic.
- Easy to clean.
- Basalt, Granite & Limestone.

## Sizes:

- 20 x 20 cm
- 33.3 x 33.3 cm
- 40 x 40 cm
- 60 x 40 cm



## *Rum* (Sandblasted)



ROYAL



BASALT BROWN



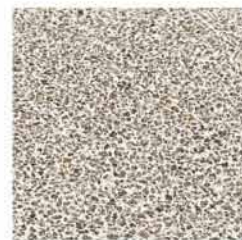
GALAXY



VERONA



BASALT BLACK



BASALT GREY



- Variations in color & texture do occur.
- Photos of the tiles shown are intended as general reference only.
- Please ask for an actual sample.



R U S T I C  
**EUROTILES®**  
LANDSCAPING



**RIVIERA** (Polished - Sandblasted)



RIVIERA GREY



RIVIERA BROWN



RIVIERA BEIGE

- Non-Slip.
- Perfect for High Traffic.
- Easy to clean.

Sizes:

- 33.3 x 33.3 cm
- 40 x 40 cm
- 60 x 40 cm



- Variations in color & texture do occur.
- Photos of the tiles shown are intended as general reference only.
- Please ask for an actual sample.





R U S T I C  
**EUROTILES®**  
LANDSCAPING



**ANDALUSI** (Polished - Sandblasted)

33.3 x 33.3 cm.



ANDALUSI GREY

40 x 40 cm.



ANDALUSI GREY



ANDALUSI BEIGE



ANDALUSI BEIGE



ANDALUSI BROWN

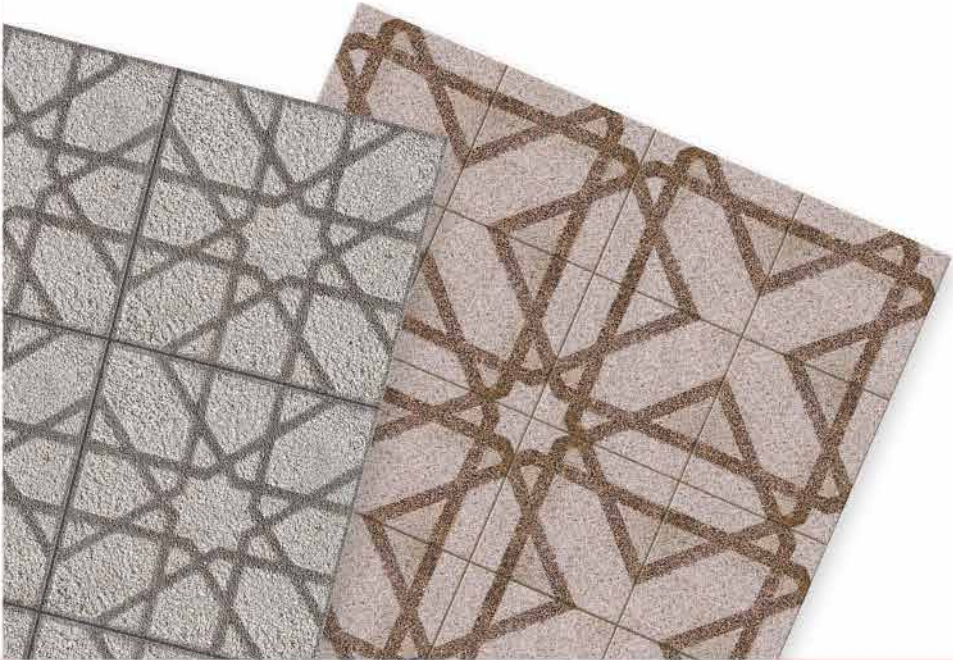


ANDALUSI BROWN

- Non-Slip.
- Perfect for High Traffic.
- Easy to clean.

Sizes:

- 40 x 40 cm
- 33.3 x 33.3 cm



• Variations in color & texture do occur.  
• Photos of the tiles shown are intended as general reference only.  
• Please ask for an actual sample.



# RUSTIC EUROTILES® LANDSCAPING

**STAR** (Polished - Sandblasted)



POLISHED &  
SANDBLASTED

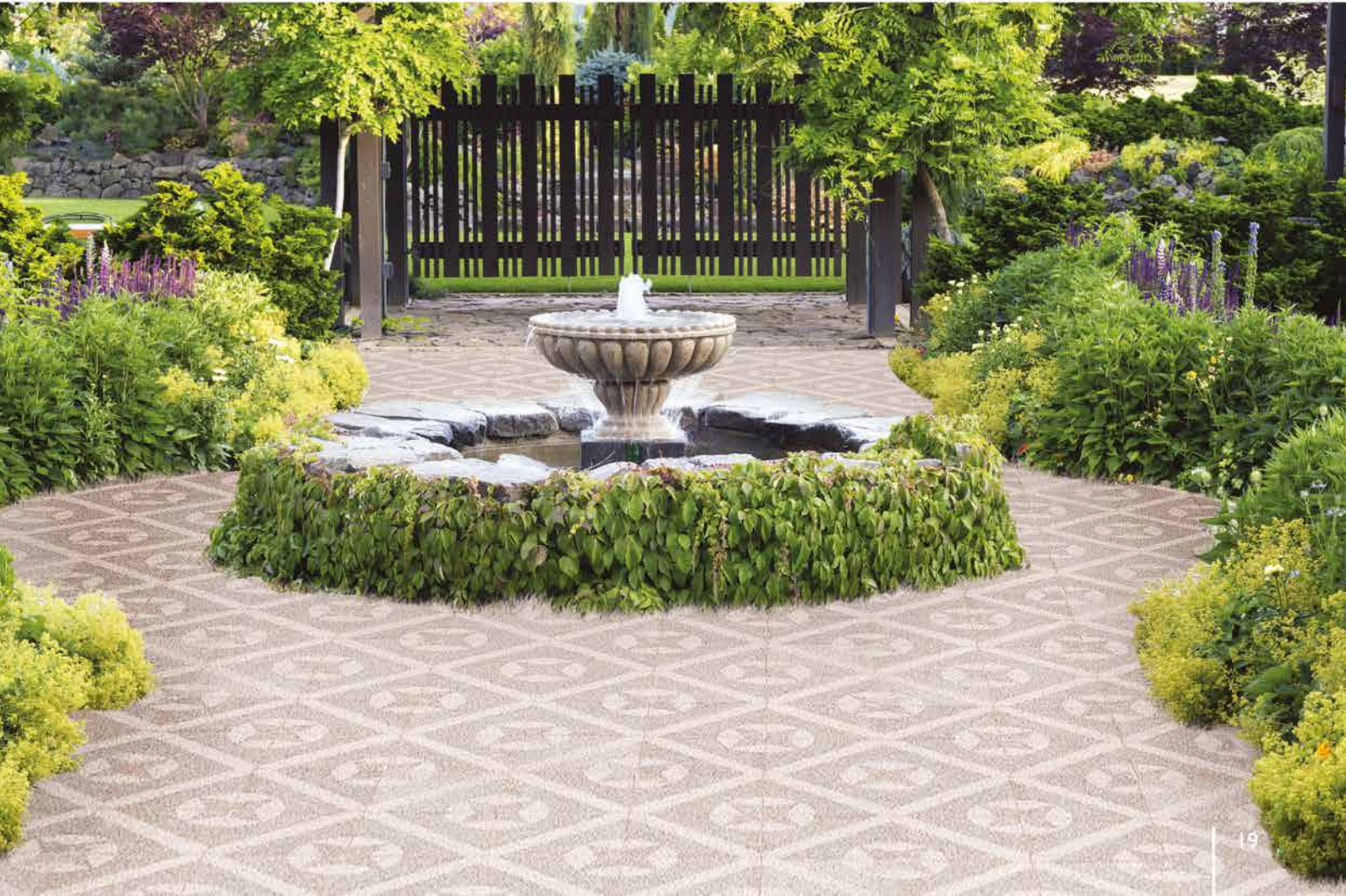


POLISHED &  
SANDBLASTED

- Non-Slip.
- Perfect for High Traffic.
- Easy to clean.

## Sizes:

- 33.3 x 33.3 cm
- 40 x 40 cm



• Variations in color & texture do occur.  
• Photos of the tiles shown are intended as general reference only.  
• Please ask for an actual sample.



R U S T I C  
**EUROTILES®**  
LANDSCAPING

**FLOWER** (Polished - Sandblasted)

33.3 x 33.3 cm.



FLOWER GREY

40 x 40 cm.



FLOWER BROWN



FLOWER BEIGE

- Non-Slip.
- Perfect for High Traffic.
- Easy to clean.

Sizes:

- 33.3 x 33.3 cm



• Variations in color & texture do occur.  
• Photos of the tiles shown are intended as general reference only.  
• Please ask for an actual sample.



# R U S T I C **EURO**TILES® LANDSCAPING



**SARAYA** (Cobble Stone Look)



- Non-Slip.
- Perfect for High Traffic.
- Easy to clean.

## Sizes:

- 40 x 40 cm

- Variations in color & texture do occur.
- Photos of the tiles shown are intended as general reference only.
- Please ask for an actual sample.





# TEXTURED **EUROTILES®** LANDSCAPING



- Non-Slip.
- Perfect for High Traffic.
- Easy to clean.

## Sizes:

- 40 x 40 cm



STAR



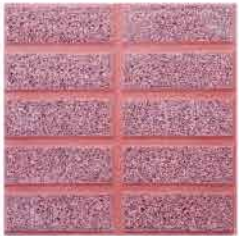
STAR



GRANADA



SANDBLASTED  
 GRANADA



DOMINO



CARPET



• Variations in color & texture do occur.  
 • Photos of the tiles shown are intended as general reference only.  
 • Please ask for an actual sample.



# RUSTIC EUROSTONE® STAIRS



- Sandblasted.
- Non-Slip.
- Perfect for High Traffic.
- Easy to clean.
- Bullnose.

## Dimensions:

- Tread : 60 x 40 x 4 cm.
- Rizer : 60 x 11.5 x 4 cm.



- Variations in color & texture do occur.
- Photos of the tiles shown are intended as general reference only.
- Please ask for an actual sample.



# EUROTILES® TERRAZZO CLASSICO



Due to their high quality & strength, uniformity of color & tremendous versatility, our “classico” precast terrazzo tiles are specified by architects & engineers in high traffic areas such as shopping centers, schools, airports, hospitals, residential complexes ...etc.

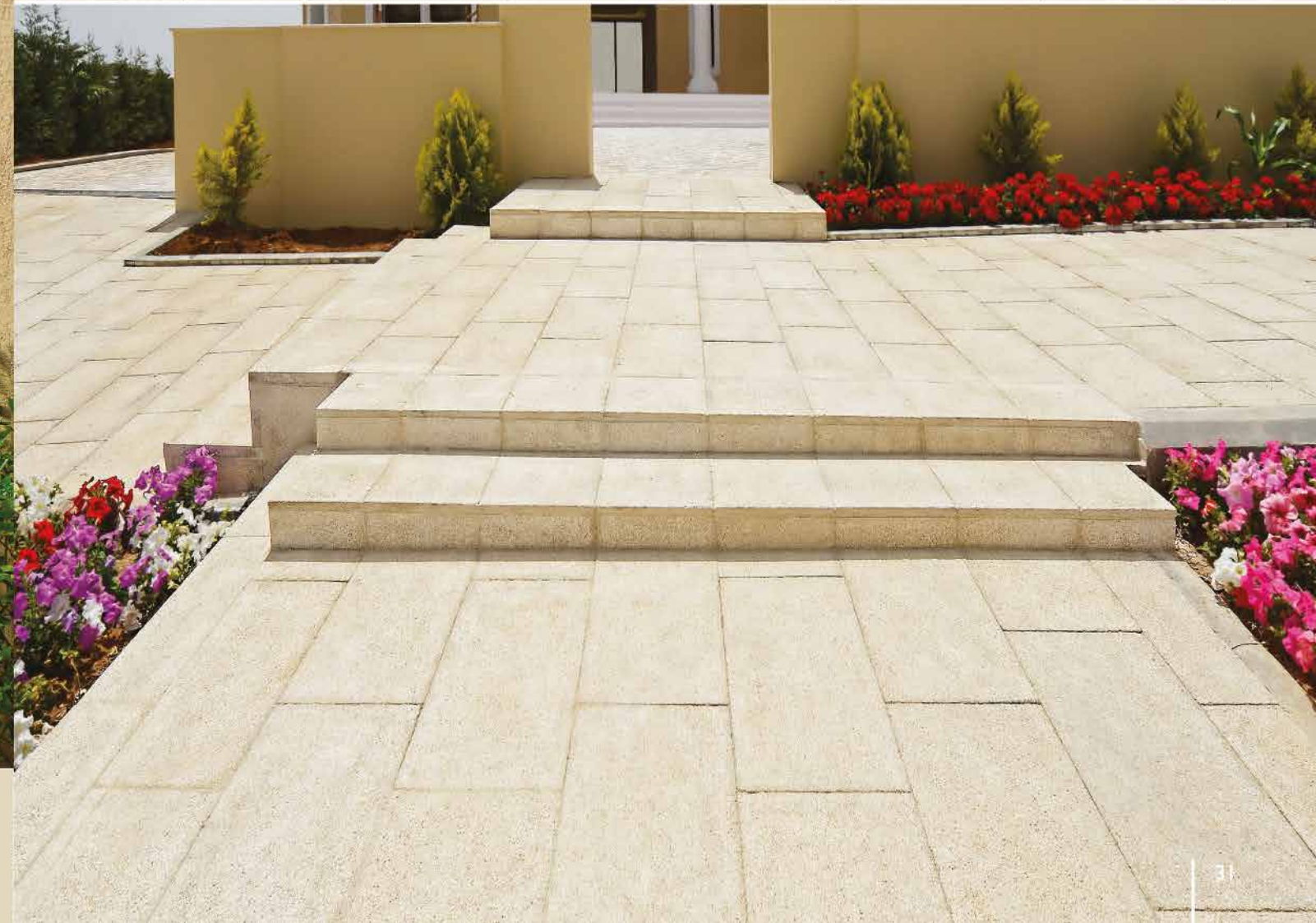
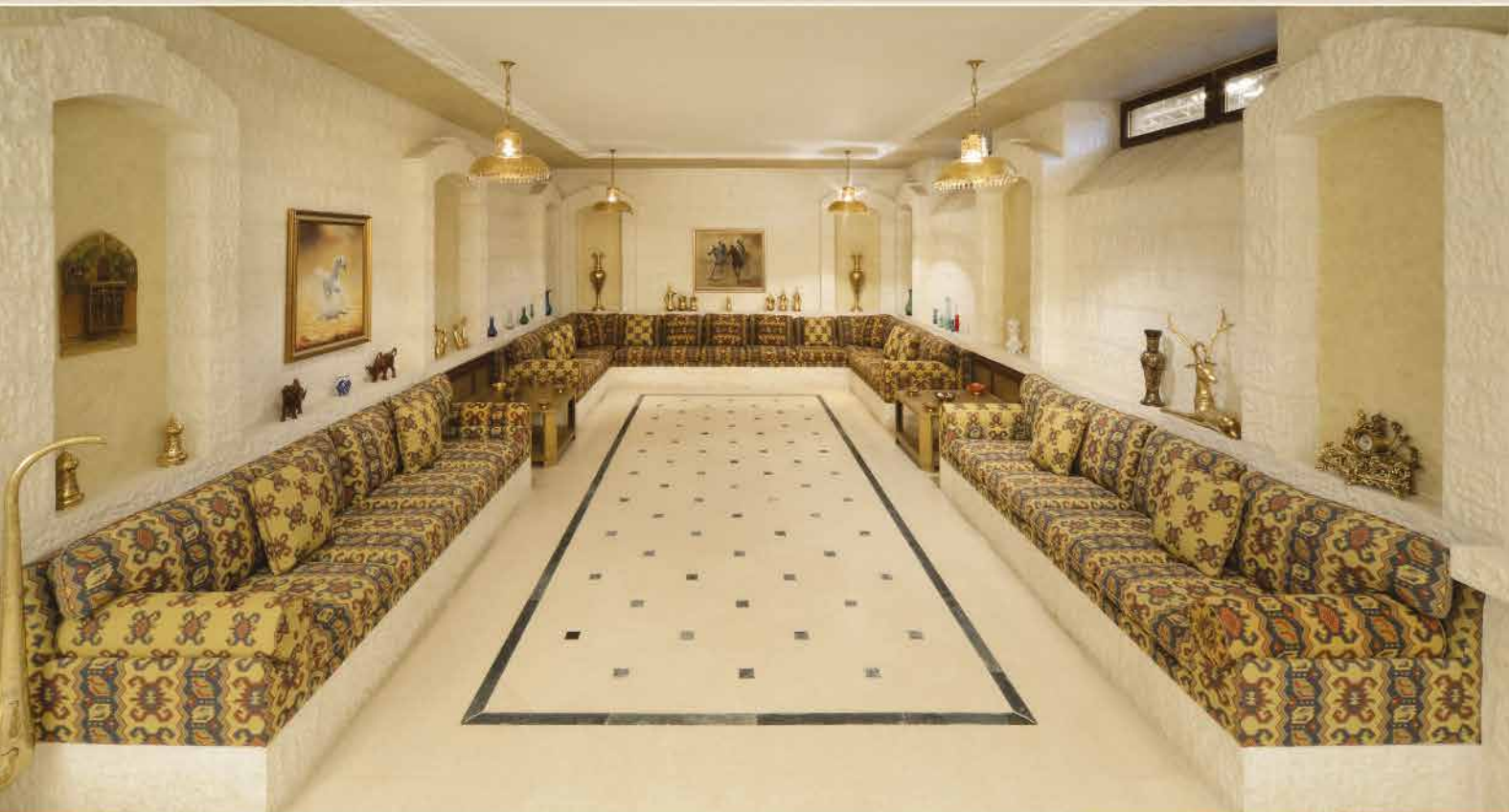
## Sizes:

- 33.3 x 33.3 cm
- 40 x 40 cm
- 40 x 60 cm
- 30 x 60 cm (full body).



- Variations in color & texture do occur.
- Photos of the tiles shown are intended as general reference only.
- Please ask for an actual sample.





- Variations in color & texture do occur.
- Photos of the tiles shown are intended as general reference only.
- Please ask for an actual sample.



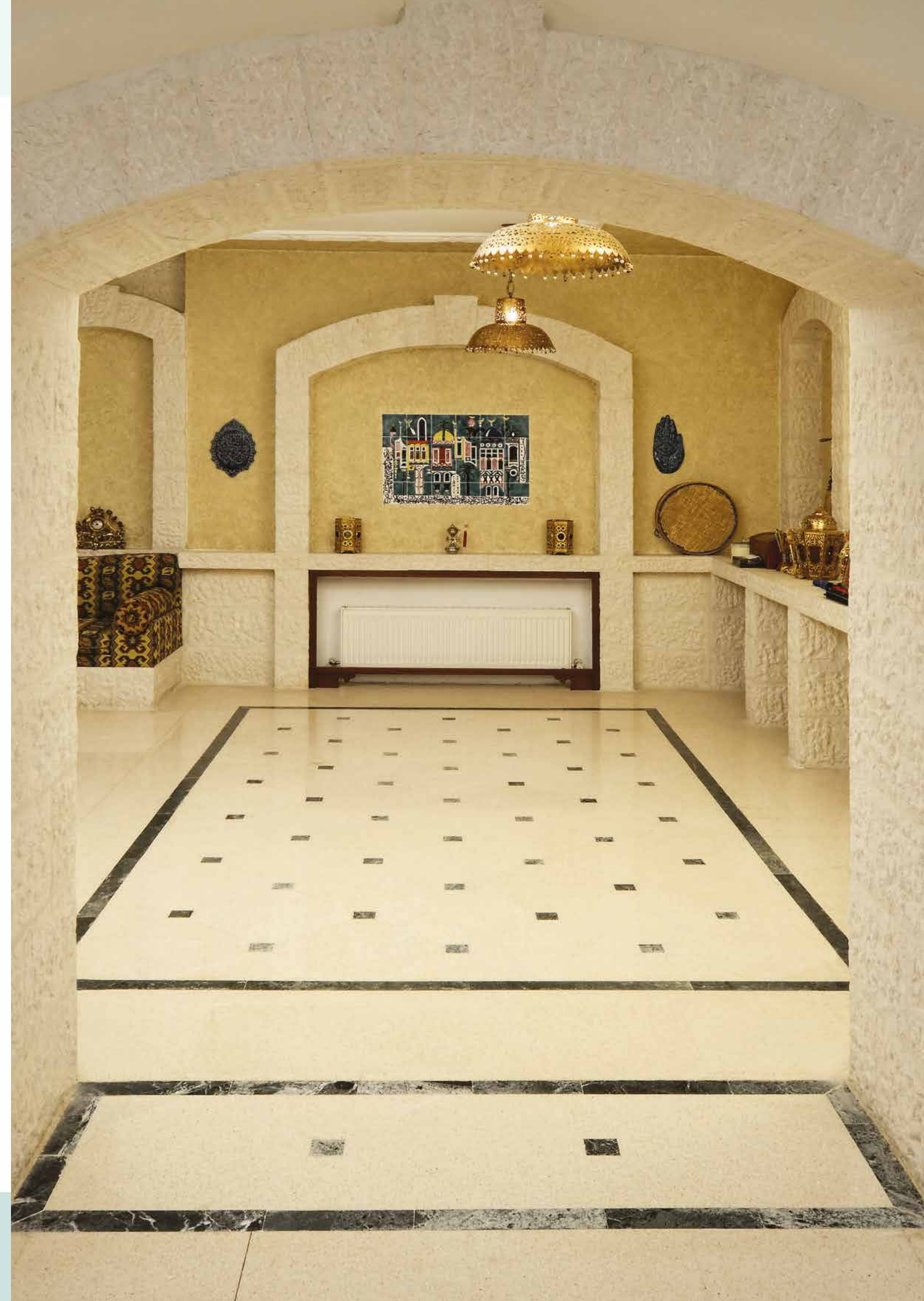
# EURO SEALER



**EURO SEALER** (Matt & Low Gloss)



**SURFACE PROTECTION  
& ENHANSMENT**







الشركة الأردنية القبطية  
للصناعات الإنشائية ذ.م.م

**Jordanian Cypriot**  
Construction Industries Co. Ltd.

 **EuroTiles®**

 **EuroStone®**

- Tel.: + 962 6 4396944
- Fax: + 962 6 4395962
- P.O. Box 357 Amman  
11118 Jordan
- e-mail: [info@jorcyp.com](mailto:info@jorcyp.com)
- [www.jorcyp.com](http://www.jorcyp.com)

**TUV**  
AUSTRIA  
HELLAS  
EN ISO 9001:2008

Authorized Distributor: